

Gel Documentation System



KETA GLX II

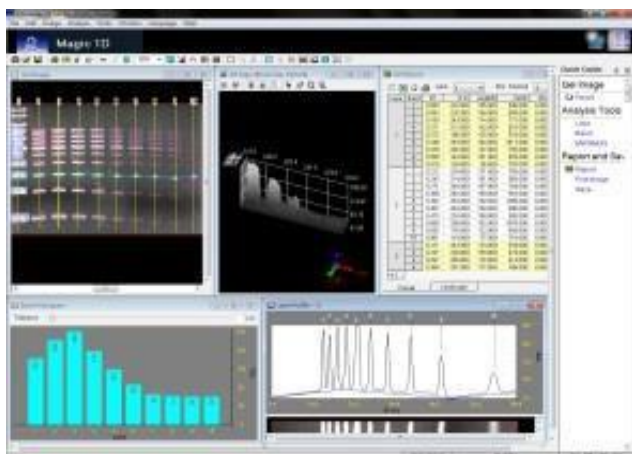
Features

- Optional BW-20 Blue/White light transilluminator for Bio-safe application
- Comply file format PCX, TGA, DFN(GEL), PNG, IMG, TIFF, BMP, JPG, GIF, etc.
- GCM function provide user get good shot anytime
- Energy save mode keep long life time of camera
- UV activation mode for stain free gel
- Wi-Fi transmission capability

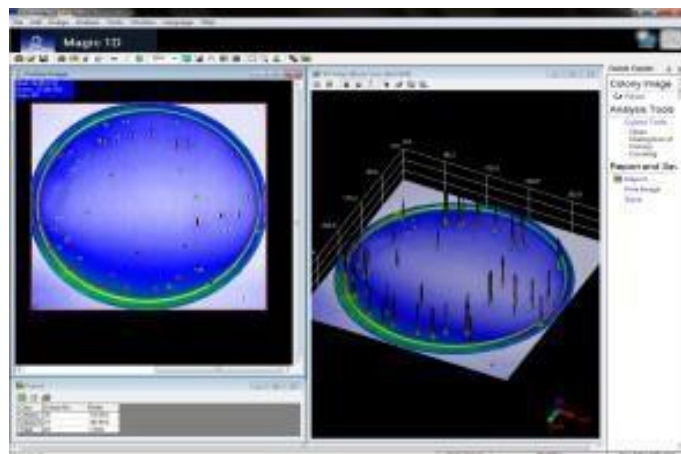
Applications

- Education, university, academic and research institute
- Protein gel stain with Coomassie Brilliant blue, X Ray film
- Agarose gel stain with EtBr, Safe Dye
- 2D Gel, all color metric target
- Micro titer, ELISA plate
- Gray level analyze

Magic 1DX software package Completed with four analysis functions



MW and Mass Determination

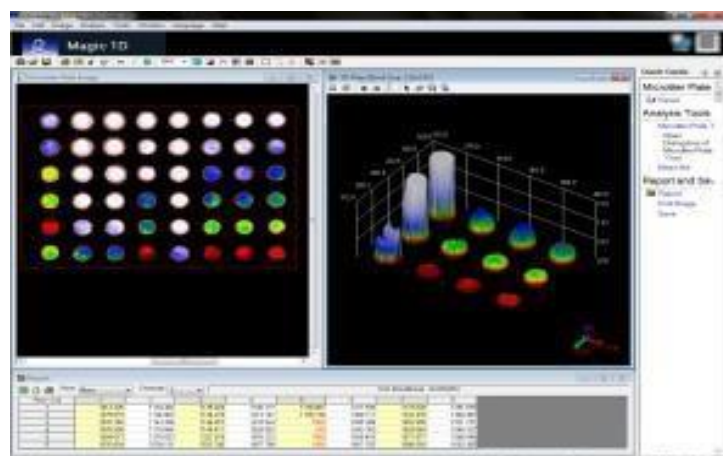


Colony Counting

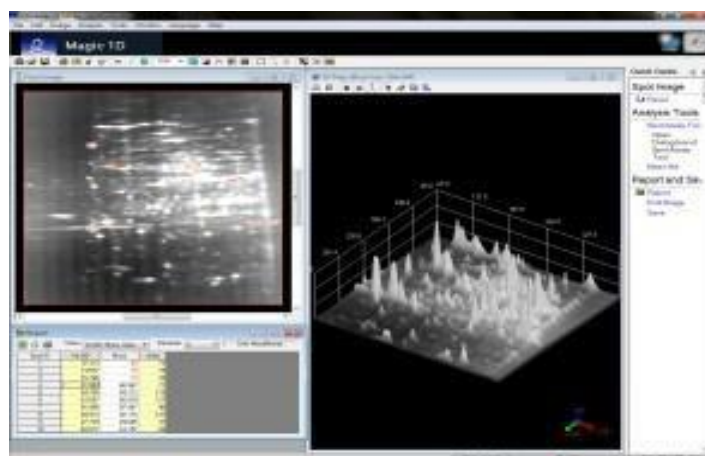
The KETA G series is an advanced research grade gel documentation system ideal for molecular biology laboratory. Comprise of high resolution 16bit B/W 5.0M pixels camera, computer controlled motorized lens, five position filter wheel coupled with a high transparent filter, 2X close-up lens. Large visual area 20 X 20cm, dual high intensity U7 LED Epi white light source, low background 302nm UV transilluminator as standard, UV radiation safety interlock darkroom. Inbuilt 24V power supply for BW-20 blue/white light transilluminator. Magic 1DX software package as standard, energy save mode for UV transilluminator while operator do not touch any icon or button. The UV transilluminator automatically turns off after image capture and turns on automatically during image capture. UV radiation activation mode for stain free gel, default excitation/emission image capture method or professional adjustment are all included.

Fully computer-controlled functions include Iris, focus, zoom, filter ID are all preset with optimum condition, professional adjust by operator can be save /recall or edit in user file, five position motorized filter wheel easy adapted optional WK filter.





Microtiter Plate Imaging

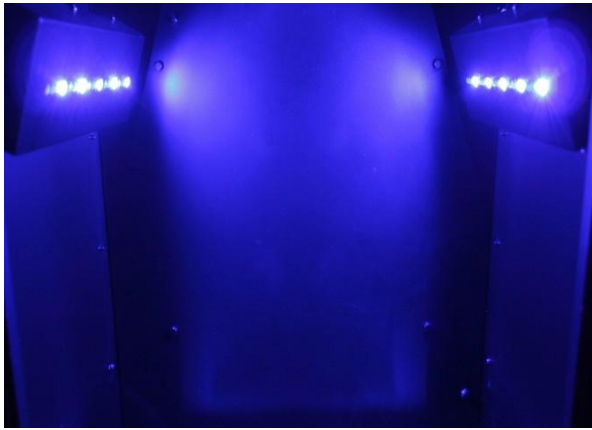


Spot Density Calculation

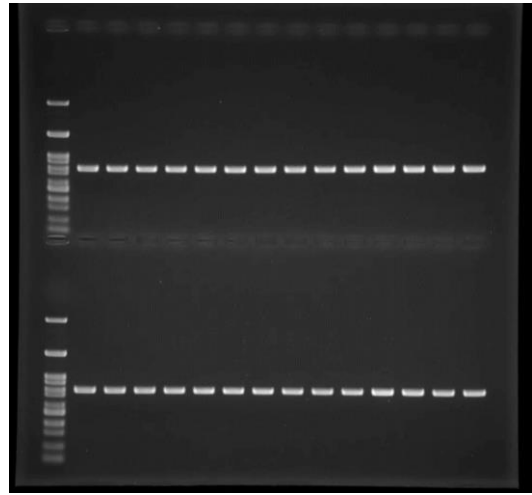
KETA GLX II with inbuilt SBC, 12" touch panel LCD, exactly fully computer controlled standalone gel documentation in the market, Magic 1DX software package as standard. KETA G family is the reliable and cost effect system, suitable for all protein gel and agarose gel, optional MC 100 RGB/white light and BW 20 transilluminator for wide variety stain application.

Magic 1DX software is integrated with genius capture GCM function allow user to preset and store capture parameter, and recall by one click. With GCM function user can get perfect result automatically. Darkroom calibration, camera shading correction, distortion correction, flat frame correction, adjustable brightness / contrast, image profiling / blending, rotating, flipping, background defining, deconvolution / sharpen, interpolate, provides whole visual area imaging at the same level. In addition, four analysis functions molecular weight and mass determination, colony counting, microtiter plate assay, and spot density calculation also included. The data can be exported into CSV file and opened with Excel.

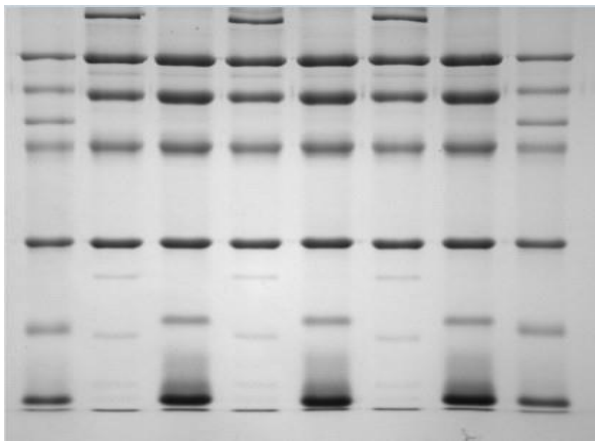




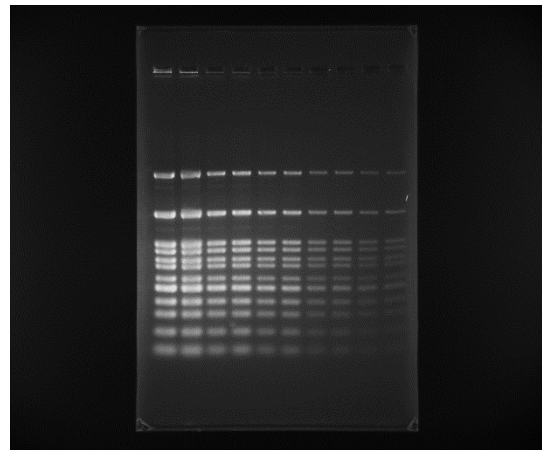
MC 100 RGB/white Epi light optional



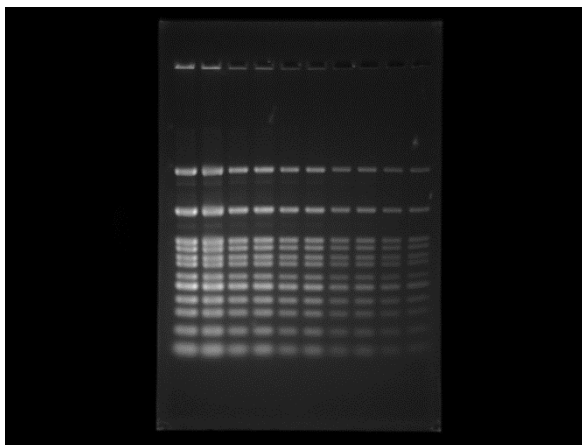
EtBr Stained Agarose Gel /UV 302 nm



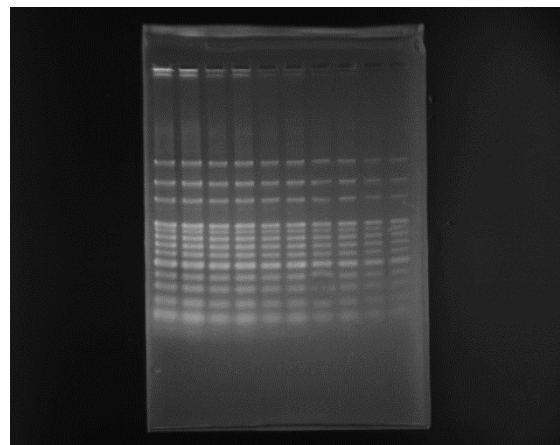
CBB stained SDS-PAGE/BW-20



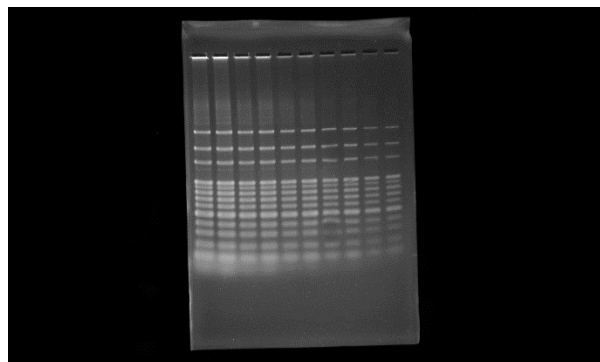
SYBR Green I stained agarose gel/BW-20



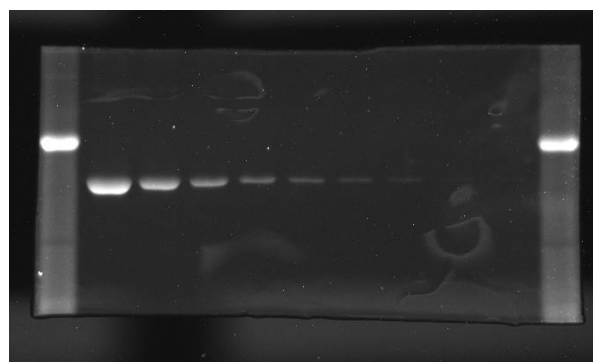
SYBR Green I stained agarose gel/ UV 302 nm



SYBR Gold stained agarose gel/BW-20



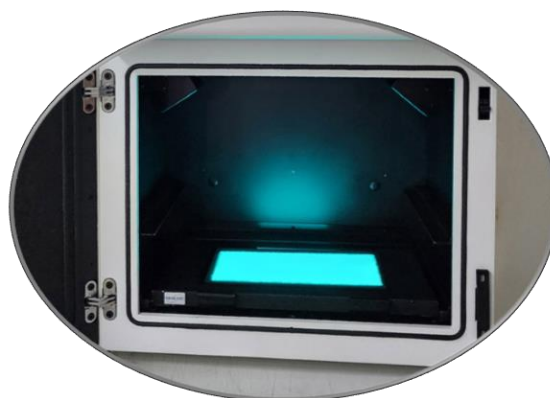
SYBR Gold stained agarose gel/MD 20S



UV Activation capability/ Stain Free Gel



FW 55 filter wheel



Built-in 24V power source for BW-20

Emission filter selection guide

	Dye/stain
WK101	EtBr, SYBR Green I / II, SYBR Gold, SYPRO Red / Ruby / Orange
WK102	SYBR Green I / II, SYBR Gold, SYBR Safe, wtGFP
WK103	EtBr, SYBR Green I / II, SYBR Gold, SYPRO Red / Ruby / Orange, Fluorescein / FITC
WK104	SYBR Ruby, EtBr
WK105	SYBR Red, Radiant Red, Texas Red

For other filters, please contact local distributor or support@wealtec.com.

Specification

Model	KETA GLX II
Camera depth	16 bit
Operation temperature	0-40°C
Chip size	2/3"
Resolution	5.0M pixels
Control and Display	12" Touch Screen/SBC
Cooling	Air, R-T
Five position filter wheel	Standard
Filter size	55mm
Motorized Lens	11.5-69mm, f1.4

Epi-light source	Dual U7 LED
UV transilluminator	MD-20S
Magic 1DX software	Yes
Wi-Fi transmission	Yes
OS system	MS Windows 11
Filter	WK 101/102
Physical dimensions	400 x 330 x 580 (W x D x H)
Weight	30 Kg
Power	100 – 240V, 50 – 60Hz

The specification is subject to change without prior notice.

Ordering Information

Catalog No.	Description
1150010	KETA GLX II gel documentation system completes with SBC, 12" touch panel LCD, 5.0 M pixels camera five position filter wheel, dual U7 Epi white light LED, MD-20S 302nm UV transilluminator, WK 101 and WK 102 emission filter & Magic 1DX software package single user key, 100-240V, 50-60Hz.
1146001	UV/white light converter plate
1146002	UV radiation block cover for gel excision
1146021	BW-20 B&W light transilluminator, 20 x 20cm with power adaptor and blue light blocking cover
8107041	MC 33 White with RGB Light Source in lieu of U7
1151210	High transparent orange filter 55mm
1151261	MD-20S 302nm UV transilluminator
1151263	HD-20S 365nm UV transilluminator
1151201	WK 101 emission filter for EtBr, SYBR Green I/II, SYBR Gold, SYPRO Red/Ruby/Orange
1151202	WK 102 emission filter for SYBR Green I / II, SYBR Gold, SYBR Safe, wtGFP
1151203	WK 103 emission filter for EtBr, SYBR Green I / II, SYBR Gold, SYPRO Red / Ruby / Orange, Fluorescein
1151204	WK 104 emission filter for SYPRO Ruby, EtBr
1151205	WK 105 emission filter for SYPRO Red, Radiant Red, Texas Red
Accessories	
1146003	Digital thermal printer
1147007	printer paper for thermal printer. 5 rolls/pack
1155031	Additional keyboard & mouse

